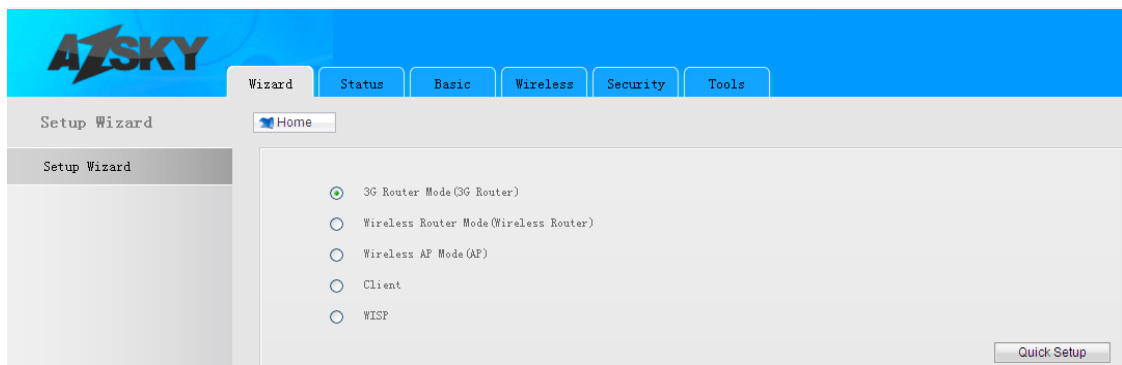
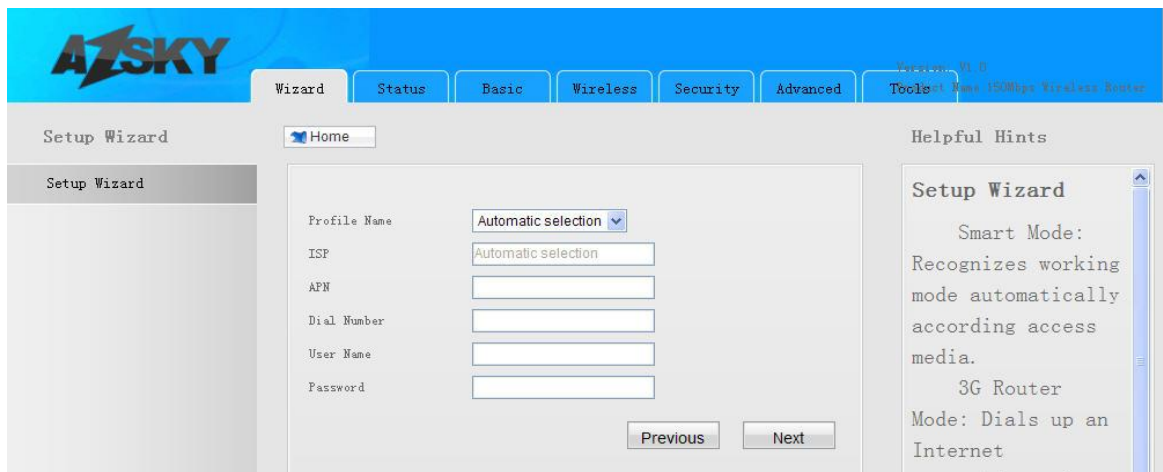




1. Use Ethernet cable connect PC and G3(Lan2 port),Setting PC IP address 192.168.0.2,open browse,input 192.168.0.1,enter,then username(admin) and password(admin),enter,choose "3G Router Mode",click "Quick Setup:"

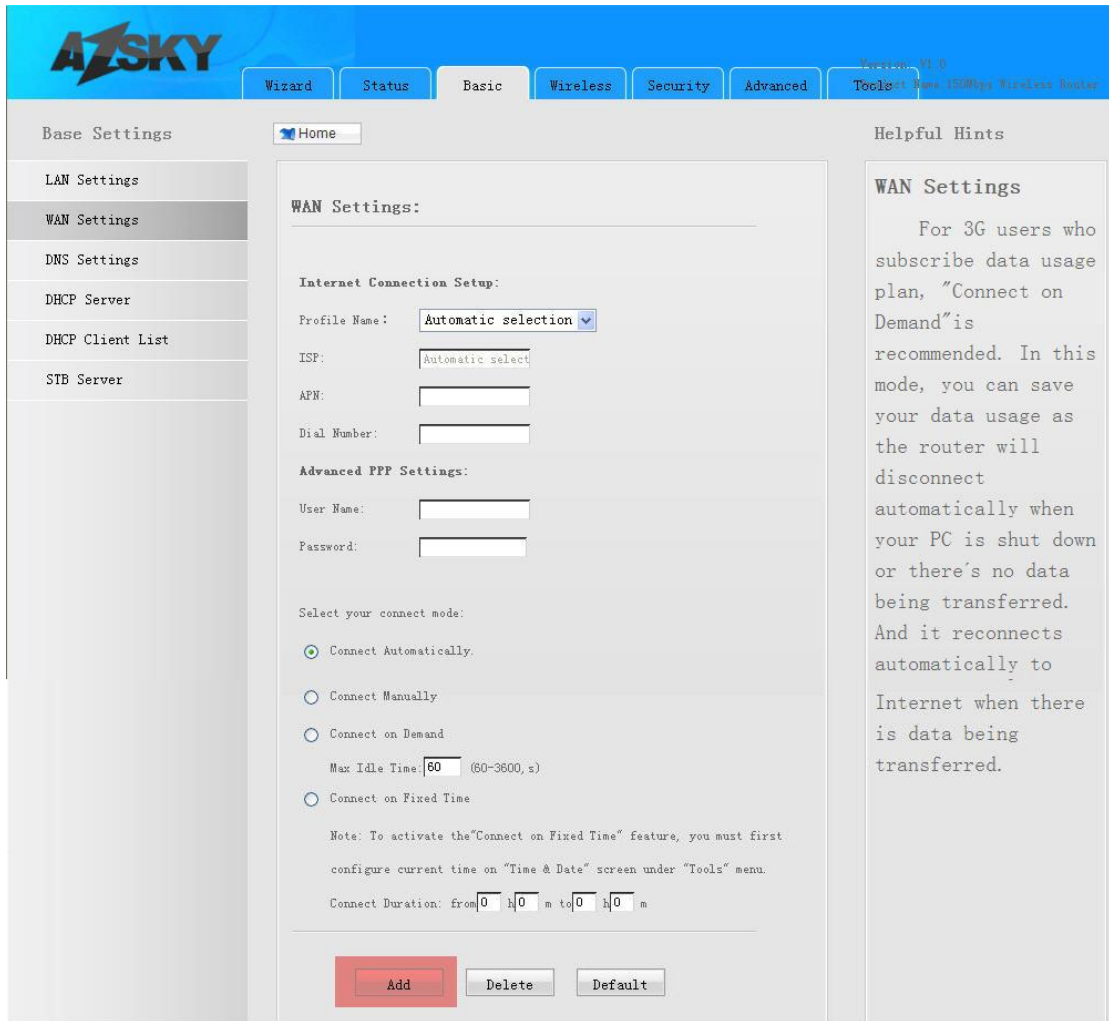


2. Setting your sim card parameter.
  - 2.1 if your 3G usb model and sim card matched,"Profile Name" can choose "Automatic selection",and click "next", turn to step 3.

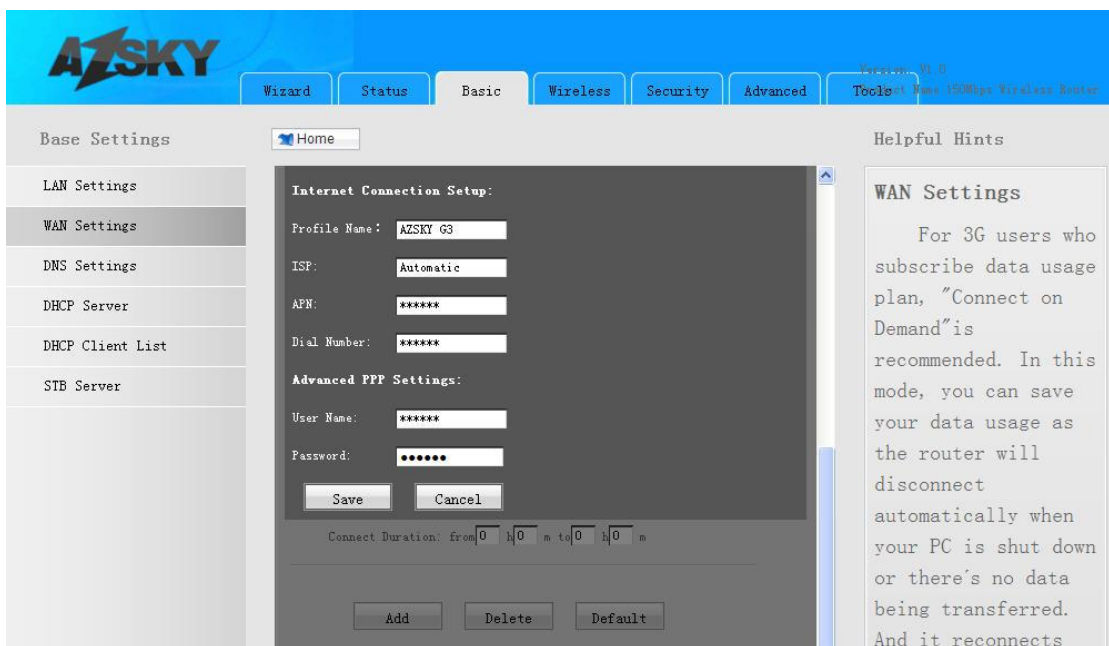


If your 3G model and sim card not matched,mean 3G usb model can not read sim card APN,you can setting sim card parameter in G3 as below.

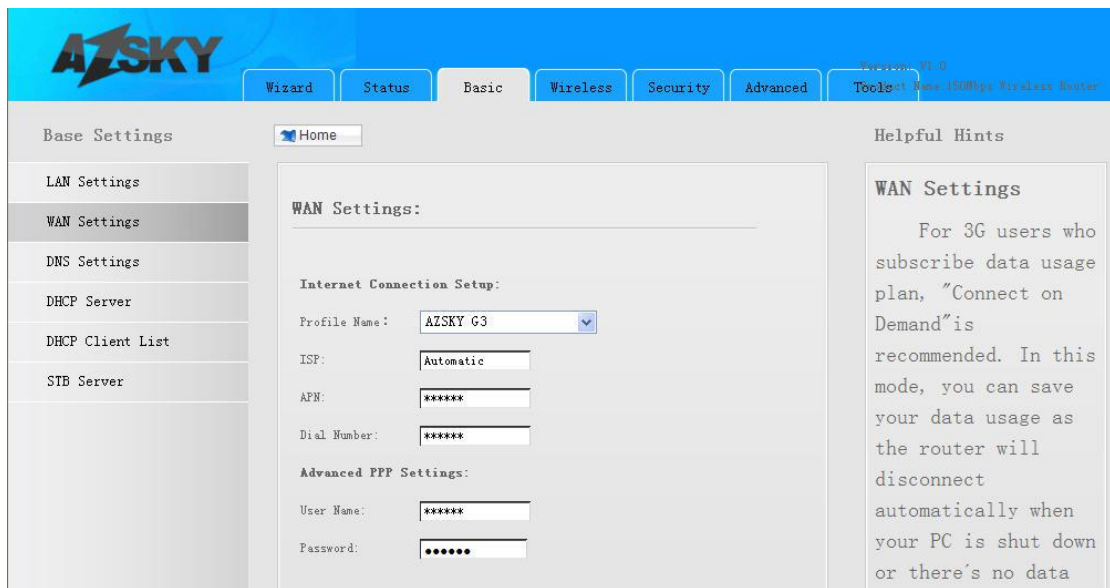
- 2.2 "Basic"- "WAN Settings",then click "Add" buttom at the botton of this page.



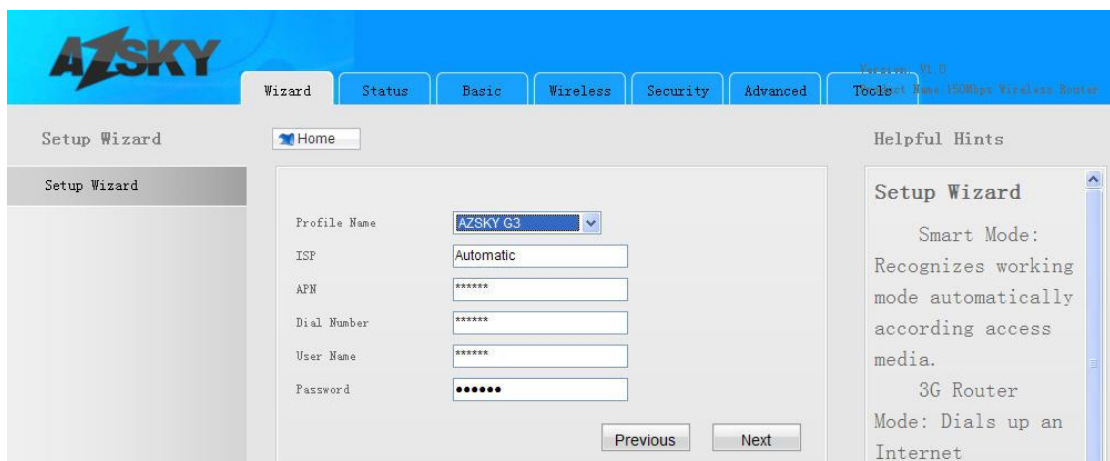
2.3 Consummate all parameter here,if your don't know,pls checking with your sim card supplier,and click "save" to save.Here i set name "AZSKY G3",then fill in ISP,APN,Dial Number,etc.



2.4 Setting finish,your can find your device showing.

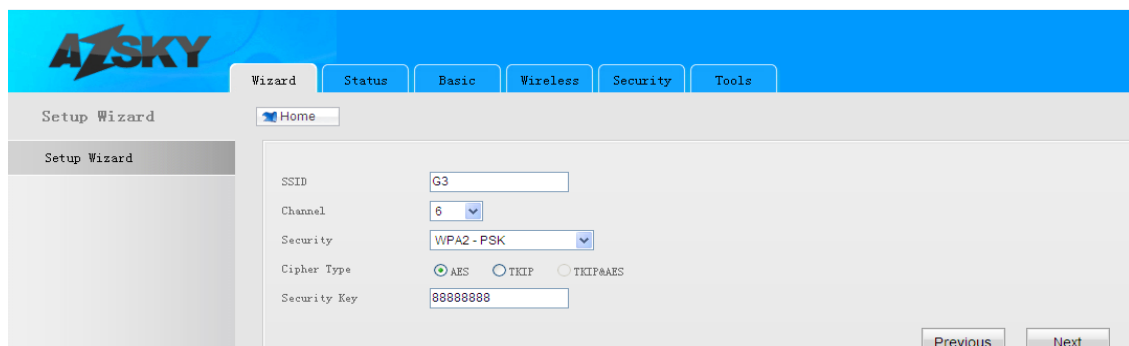


2.5 Turn to step 2.1,checking profile name again,you can find "AZSKY G3" here,choose and see all detail what you fill in before,then click "next".



3. Configure SSID, channel and security key for wireless,then "next".

G3 working time,other wireless equipment also can use this network for internet,for example mobile phone,notebook.



4. Finished settings and click "Save" to save your settings and device,G3 will reboot automatically.



5. Then connect 3G model, G3 adapter, satellite receiver, all equipment power on, and open twin protocol of satellite receiver. Wait around 2 minutes, encrypt channel will be opened on TV. If not work, pls check the LED working status, any problem will be shown on the light state.

From the LED display, you will easily know your G3 working status.

Status	Description
Red long light	3G login(3G router mode)
Red blink	3G login OK(3G router mode)
Green long light	Internet login(except 3G router mode)
Green blink	Internet login OK(except 3G router mode)
Orange blink	RS232 OK(3G router mode)
Green long light(WAN/LAN port)	Physics connection OK
Green blink(WAN/LAN port)	Data Update

**Notice: G3 have 5 kind of working mode: 3G router, wireless router, wireless AP, client, WISP. Only working in 3G router, wireless router and wireless AP mode, can open satellite encrypt channel.**

